

Name: _____

Phone: _____

Email: _____

PRINT REQUEST DETAILS

Colour (see current available options):

Quality: low standard high

File name: _____

Number of objects: _____

Notes: _____

Cost: _____

By signing this form I acknowledge I have read and agree with the library 3D printing terms and conditions set out in these guidelines and abide by the Australian Copyright Laws.

Signature: _____

Date: _____

Staff initials: _____



The Flashforge Inventor II 3D printer is made available through a generous donation from the Friends of the Kiama Library.

How do I make a 3D model?

Design from scratch: use free CAD (computer-aided design) web-based software, such as Tinkercad, 3D TADA, Fusion 360, FreeCAD or Meshmixer to design your own 3D model.

From the cloud: try downloading 3D models other designers have shared, from popular websites such as www.thingiverse.com

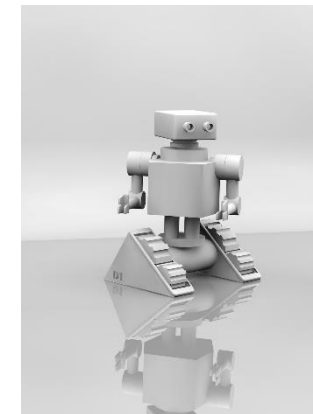


7 Railway Parade, Kiama
(02) 4233 1133
www.library.kiama.nsw.gov.au



*Design
make
create
fix
inspire*

**3D
PRINTING**



**Custom design and
create your own
gifts, toys, art,
jewellery or
practical objects
@ Kiama Library**

Cost and payment

The cost to print is \$5 set-up fee (includes first hour of printing) plus \$2 per additional hour, charged in 15-minute increments. Large, multi-piece projects will be added together and given one final cost. Fees are calculated and paid up front.

Customers are responsible for the cost associated with any errors in the file, incorrect files and breakage of object parts due to insufficient strength or mishandling.

What can be printed?

Material: The library uses plant-based PLA bio filament derived from renewable sources, which is odourless and less toxic for people and the environment.

Colour: 3D objects can be printed in one colour (e.g., black, red, white, blue, pink, green, yellow, clear) based on current availability – ask at the front desk).

Maximum print size (mm): 140 (L) X 150 (W) X 140 (H)

Quality: Flashforge Inventor II prints between 50-400 microns layer resolution (50 being ultra-high quality and 400 low quality). Note, the print quality affects print time and cost.

Print time limits: print time is limited to library opening hours as the 3D printer cannot operate unattended.

Appropriate usage: Kiama Library reserves the right to reject any print request we deem inappropriate (e.g., designs that are illegal, unsafe, harmful, dangerous, or otherwise inappropriate for the library environment, or that violate copyright, patent or trademark protection).

How do I print my 3D object?

Staff will review your saved print request with you, provide a total cost and estimated time of job completion, and prepare your print. Same-day printing is not assured – printing is scheduled on a first come, first served basis, and around library opening hours and other staff commitments.

File supply: completed filament printer models must be supplied in .stl format (we will add any necessary supports prior to printing). All work must be saved to a flash drive or emailed to library@kiama.nsw.gov.au

Staff assistance: library staff are not responsible for the design, clean-up or refinement of virtual models – customers must resolve any design issues.

Need help? 3D modelling workshops are scheduled periodically by the library – please check our website or inquire at the front desk.



Collecting your printed model

Once your model is complete you will be notified via phone or email. All objects must be collected from the Kiama Library branch. The library will only hold onto finished objects for two weeks.

All models are supplied with supports intact (raw off bed). Large, multi-piece projects will be supplied as individual pieces to be constructed by the patron. The Library is not responsible for fault in the design leading to failure in printing.